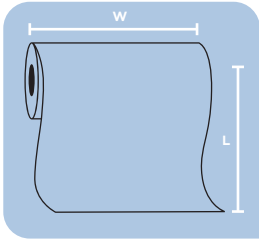




POLY TUBING



THE BASICS

Our Poly Tubing is suitable for a wide variety of uses and is manufactured to exact specifications to ensure consistent wall thickness and superior clarity. Available in a range of stock sizes or can be customized to your exact specifications.

TECHNICAL DETAILS

Made from a performance blend of Low and Linear Low-Density Polyethylene that meets FDA/USDA specifications. All tubing is heat sealable and comes on rolls with 3" cores.

1.5 MIL POLY TUBING

ITEM	WIDTH	FT/RL	WT
1800	3"	2000	8
1805	4"	4000	19

2 MIL POLY TUBING

ITEM	WIDTH	FT/RL	WT
1890	1"	1500	2
1900	2"	1500	4
1905	2.5"	1500	6
1910	3"	1500	7
1915*	4"	3000	17
1920*	5"	3000	21
1925*	6"	3000	26
1927*	7"	3000	31
1930*	8"	3000	35
1940*	10"	3000	44
1945*	12"	3000	53
1947*	13"	2700	51
1950*	14"	2700	55
1955*	16"	2700	63
1960*	18"	2400	63
1965*	20"	2100	61
1967*	22"	1800	58
1970*	24"	1800	64
1972*	26"	1650	63
1975*	28"	1650	68
1977*	30"	1500	66
1980*	32"	1500	71
1985*	36"	1350	72
1990*	40"	1200	71
1995*	48"	900	65

3 MIL POLY TUBING

ITEM	WIDTH	FT/RL	WT
2000	1"	1000	3
2005	1.5"	1000	5
2010	2"	1000	6
2020	3"	1000	8
2025*	4"	2000	18
2030*	5"	2000	22
2035*	6"	2000	27
2040*	8"	2000	35
2045*	9"	2000	40

3 MIL POLY TUBING

ITEM	WIDTH	FT/RL	WT
2050*	10"	2000	44
2055*	12"	2000	52
2060*	14"	1800	55
2065*	16"	1800	62
2070*	18"	1600	62
2075*	20"	1400	61
2080*	24"	1200	64
2085*	28"	1100	67
2087*	30"	1000	66
2090*	32"	1000	70
2092*	36"	900	71
2093*	40"	800	71
2094*	48"	600	65

4 MIL POLY TUBING

ITEM	WIDTH	FT/RL	WT
2095	1"	750	4
3005	2"	750	6
3010	2.5"	750	7
3015	3"	750	8
3020*	4"	1500	18
3025*	5"	1500	23
3030*	6"	1500	27
3032*	7"	1500	31
3035*	8"	1500	35
3040*	9"	1500	40
3045*	10"	1500	44
3050*	12"	1500	53
3055*	14"	1350	55
3060*	16"	1350	63
3065*	18"	1200	63
3070*	20"	1050	61
3072*	22"	900	58
3075*	24"	900	64
3077*	26"	825	63
3082*	30"	750	66
3090*	36"	675	72
3095*	40"	600	71
3100*	48"	450	65
3108*	60"	350	67

* ENGINEERED AND MANUFACTURED IN THE U.S.A.

CONTACT US FOR MORE INFORMATION



Veteran Packaging Company
900 Rutter Avenue
Forty Fort, Pennsylvania 18704

www.vetpackagingco.com
bsmith@vetpackagingco.com
410-830-9496

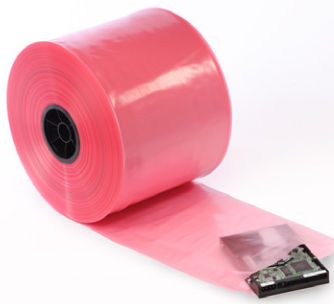
POLY TUBING (CONT.)



6 MIL POLY TUBING

ITEM	WIDTH	FT/RL	WT
2105	3"	500	8
2106*	4"	1000	19
2107*	5"	1000	24
2108*	6"	1000	28
2109*	7"	1000	33
2110*	8"	1000	37
2111*	9"	1000	42
2112*	10"	1000	46
2114*	12"	1000	55
2115*	13"	900	54
2116*	14"	900	58
2118*	16"	900	66
2119*	18"	800	66
2120*	20"	700	64
2122*	22"	600	61
2124*	24"	600	67
2128*	28"	550	71
2130*	30"	500	69
2132*	32"	500	74
2135*	36"	450	75
2140*	40"	400	75
2145*	48"	300	68

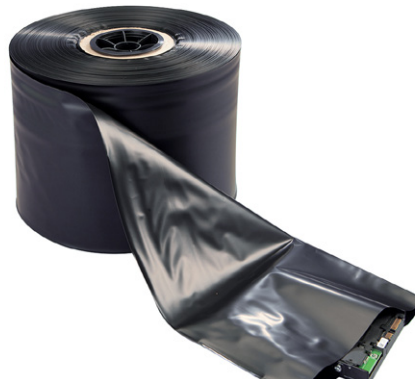
BUILD ANY SIZE: **Mil: 0.75-8 Width: 1"-98"**
 MORE OPTIONS: **Materials, Film Color, Printing, Venting, Packaging Details**



Pink Anti-Static Tubing

ITEM	WIDTH	FT/RL	WT
4 MIL - 3" CORE			
12515*	10"	750	26
12520*	12"	750	30
12545*	24"	750	60
12550*	32"	500	55

BUILD ANY SIZE:
Mil: 0.75-8 Width: 4"-98"
 MORE OPTIONS:
Printing, Venting, Packaging Details



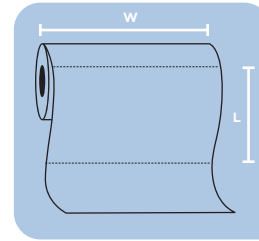
Black Conductive Tubing

ITEM	WIDTH	FT/RL	WT
4 MIL			
5706	4"	750	14
5708	6"	750	21
5709	8"	750	28
5710	10"	750	35
5711	12"	750	40
5712	14"	750	47

BUILD ANY SIZE: **Mil: 2-10 Width: 2"-60"**
 MORE OPTIONS: **Packaging Details**

* ENGINEERED AND MANUFACTURED IN THE U.S.A.

POLY SLEEVES



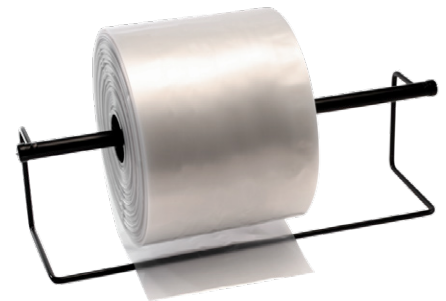
THE BASICS

Our Poly Sleeves can be performed on rolls or packaged in cases for easy product loading. Suitable for a variety of applications.

TECHNICAL DETAILS

Made from a performance blend of Low and Linear Low-Density Polyethylene that meets FDA/USDA specifications. All sleeves are heat sealable and are available in Layflat or Gusseted constructions.

LAYFLAT SLEEVES: **Mil: 0.75-8 Width: 4"-98" Length: 4"-288"**
 GUSSETED SLEEVES: **Mil: 0.75-6 Width: 4"-96" Depth: 3"-72" Length: 8"-288"**
 MORE OPTIONS: **Materials, Film Color, Printing, Venting, Packaging Details**



ROLL DISPENSERS

Made of steel, these can accommodate a roll of up to 13.5" in diameter.

ITEM	SIZE	CNT	WT
4830	12"	1	2
4832	24"	1	3

CONTACT US FOR MORE INFORMATION



Veteran Packaging Company
 900 Rutter Avenue
 Forty Fort, Pennsylvania 18704

www.vetpackagingco.com
 bsmith@vetpackagingco.com
410-830-9496